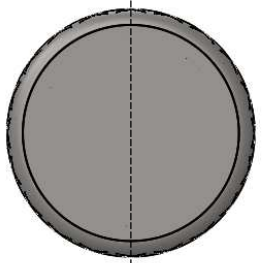
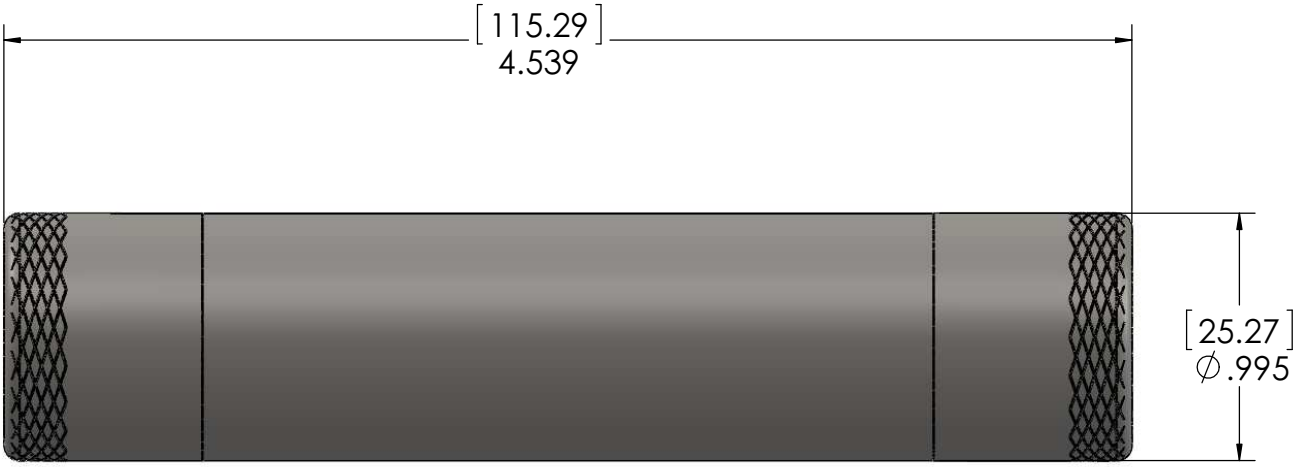
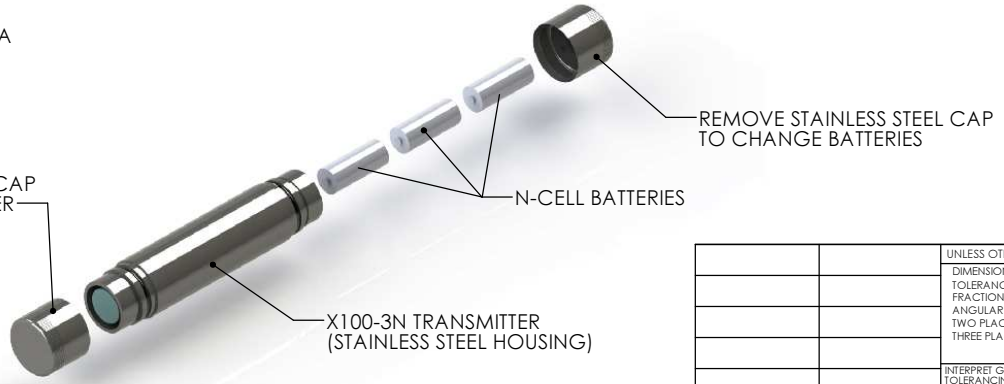


8 7 6 5 4 3 2 1

REV.	DESCRIPTION	DATE	APPROVED
A	RELEASE TO PRODUCTION	6/1/2015	KRW



A  
A



REMOVE STAINLESS STEEL CAP TO PROGRAM TRANSMITTER

NOTE:  
1. DIMENSIONS ARE IN INCHES AND [MILLIMETERS]  
2. MAXIMUM OPERATING PRESSURE: 2500PSI

**PROPRIETARY AND CONFIDENTIAL**  
THE INFORMATION CONTAINED IN THIS DRAWING IS THE SOLE PROPERTY OF CDI. ANY REPRODUCTION IN PART OR AS A WHOLE WITHOUT THE WRITTEN PERMISSION OF CDI IS PROHIBITED.

		UNLESS OTHERWISE SPECIFIED:		NAME		DATE	
		DIMENSIONS ARE IN INCHES		DRAWN			
		TOLERANCES:		CHECKED			
		FRACTIONAL ± 1/32		ENG APPR.			
		ANGULAR: ± 2°		MFG APPR.			
		TWO PLACE DECIMAL ± .03		Q.A.			
		THREE PLACE DECIMAL ± .010		COMMENTS:			
		INTERPRET GEOMETRIC TOLERANCING PER: ASME Y14.5M - 1994					
		MATERIAL					
		FINISH					
NEXT ASSY	USED ON						
APPLICATION		DO NOT SCALE DRAWING		ECN #:			

<b>CDI</b>			
TITLE: <b>GENERAL ARRANGEMENT, X100-3N STANDARD</b>			
SIZE	DWG. NO.	REV	
<b>B</b>	<b>81-03-0100-00</b>	<b>A</b>	
SCALE: 1:1	WEIGHT:	SHEET 1 OF 1	

8 7 6 5 4 3 2 1

V:\X100\Mechanical models\3N\ 81-03-0100-00 ASSY, X100-3N STANDARD TRANSMITTER