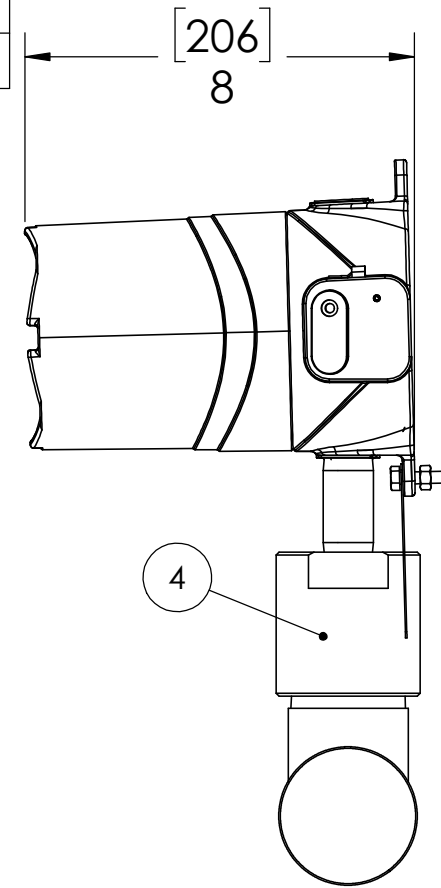
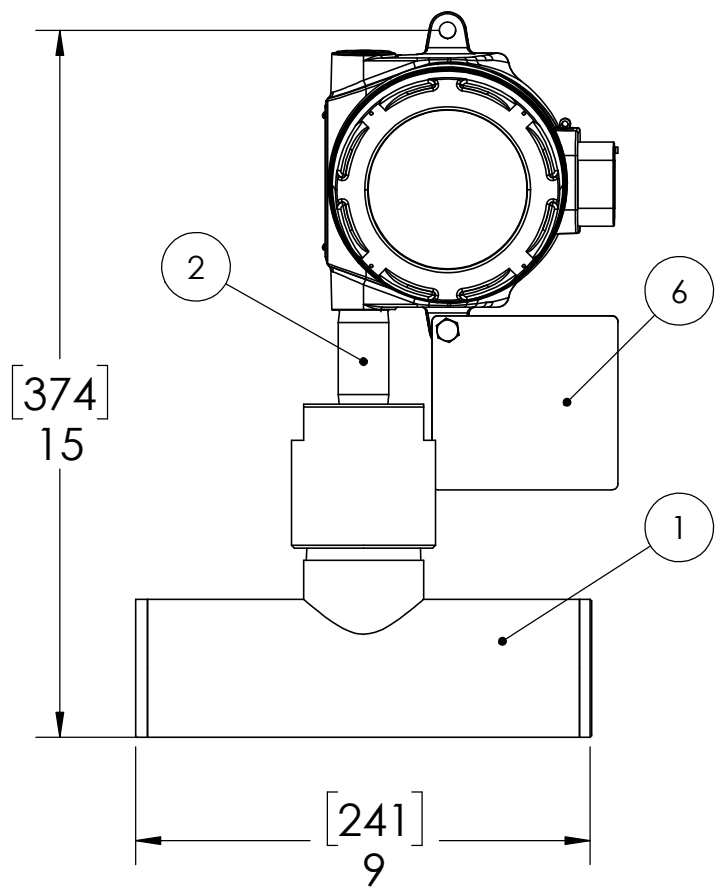
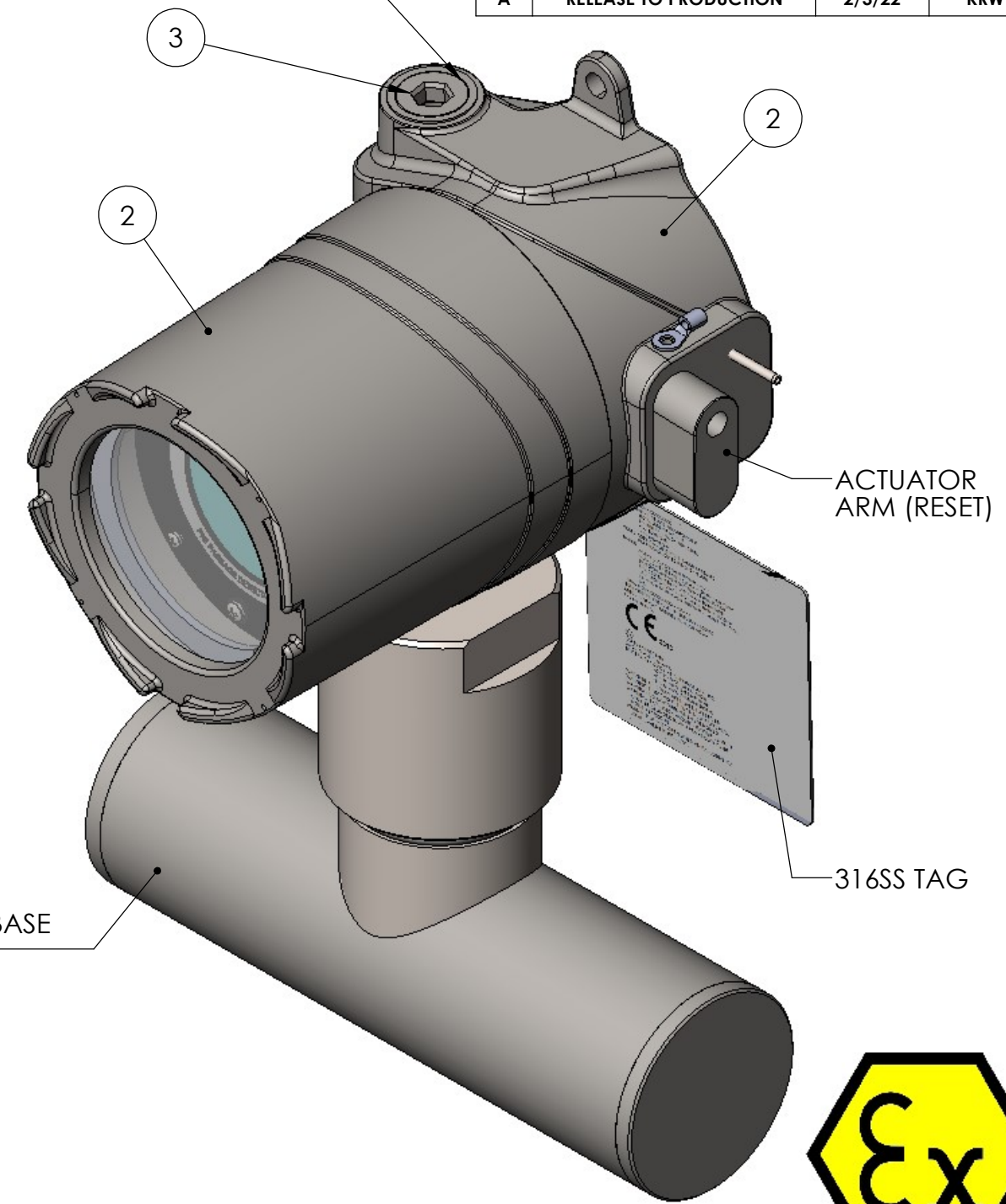


| ITEM NO. | PART NUMBER | DESCRIPTION | QTY. |
|----------|-----------------|--|------|
| 1 | 81-02-0022-XX - | ASSEMBLY, ATEX STAINLESS STEEL BANDIT ANTENNA BASE 10" | 1 |
| 2 | 795-18-0005-01 | ENCLOSURE EXPLOSION PROOF 316SS ATEX | 1 |
| 3 | 800-05-2006-23 | PLUG, 3/4 NPT SS IEC Ex CERTIFIED | 1 |
| 4 | 923-23-0001-01 | FITTING, 2" X 3/4" 316 SS REDUCING | 1 |
| 5 | 4452K169 | REDUCER, 3/4"NPT X 3/8"NPT, 316SS | 1 |
| 6 | 921-01-XXXX-XX | TAG, CD52 BANDIT ATEX | 1 |
| 16 | 80-03-0007-01 | ASSEMBLY SWING ARM MAGNET ACTUATOR FOR 316SS | 1 |
| 17 | 722-23-0001-00 | 1/8" DIA SLOTTED SPRING PIN 316SS | 1 |

| REVISIONS | | | |
|-----------|-----------------------|--------|----------|
| REV. | DESCRIPTION | DATE | APPROVED |
| A | RELEASE TO PRODUCTION | 2/3/22 | KRW |

CUSTOMER CONNECTION



MOUNTING BASE OPTIONAL

PROPRIETARY AND CONFIDENTIAL
 THE INFORMATION CONTAINED IN THIS DRAWING IS THE SOLE PROPERTY OF CDI. ANY REPRODUCTION IN PART OR AS A WHOLE WITHOUT THE WRITTEN PERMISSION OF CDI IS PROHIBITED.

| | | | |
|-------------|----------|---|--|
| VENDOR | PART NO. | UNLESS OTHERWISE SPECIFIED: DIMENSIONS ARE IN INCHES TOLERANCES: FRACTIONAL ± 1/32 ANGULAR: ± 2° TWO PLACE DECIMAL ± .03 THREE PLACE DECIMAL ± .010 | CDI TITLE: FINAL ASSEMBLY 316SS 100% PORTABLE BANDIT |
| | | INTERPRET GEOMETRIC TOLERANCING PER: ASME Y14.5M - 1994 | |
| | | MATERIAL | PART TYPE FINAL ASSEMBLY |
| NEXT ASSY | USED ON | FINISH | COMMENTS: SIZE DWG. NO. REV B 81-05-0090-XX-V-XXX A |
| APPLICATION | | DO NOT SCALE DRAWING | SCALE: 1:0.25 WEIGHT: SHEET 1 OF 1 |

8 7 6 5 4 3 2 1

8 6 5 4 3 2 1

D

D

C

C

B

B

A

A