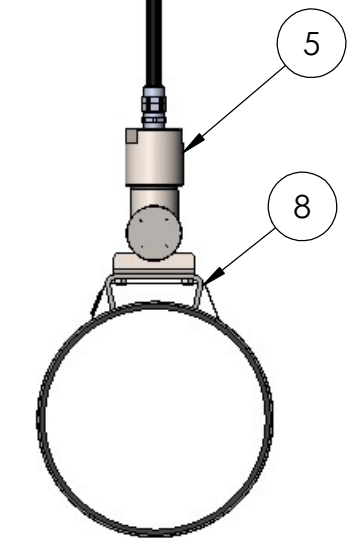
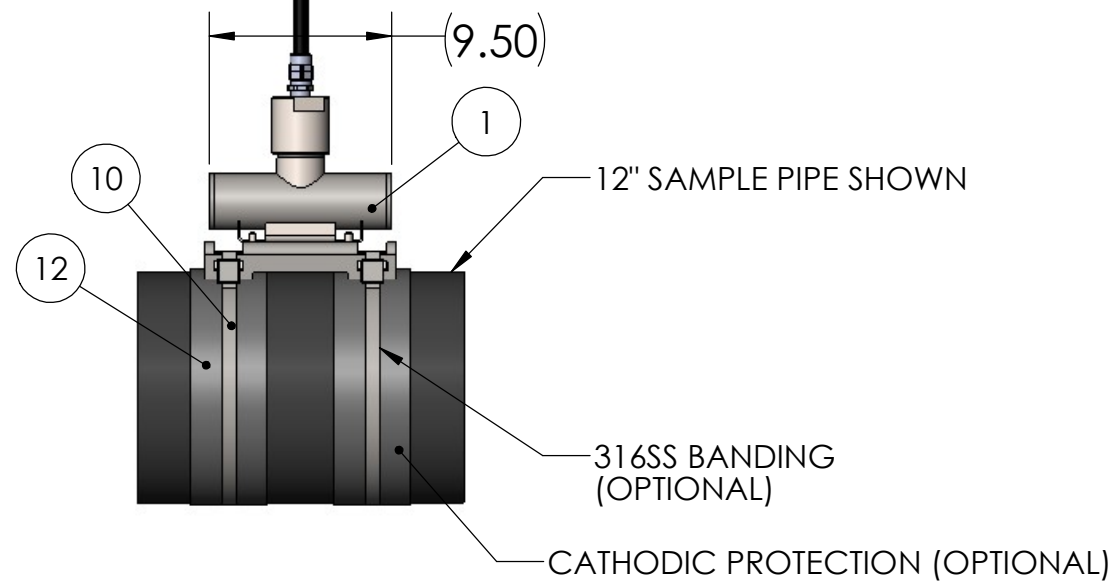
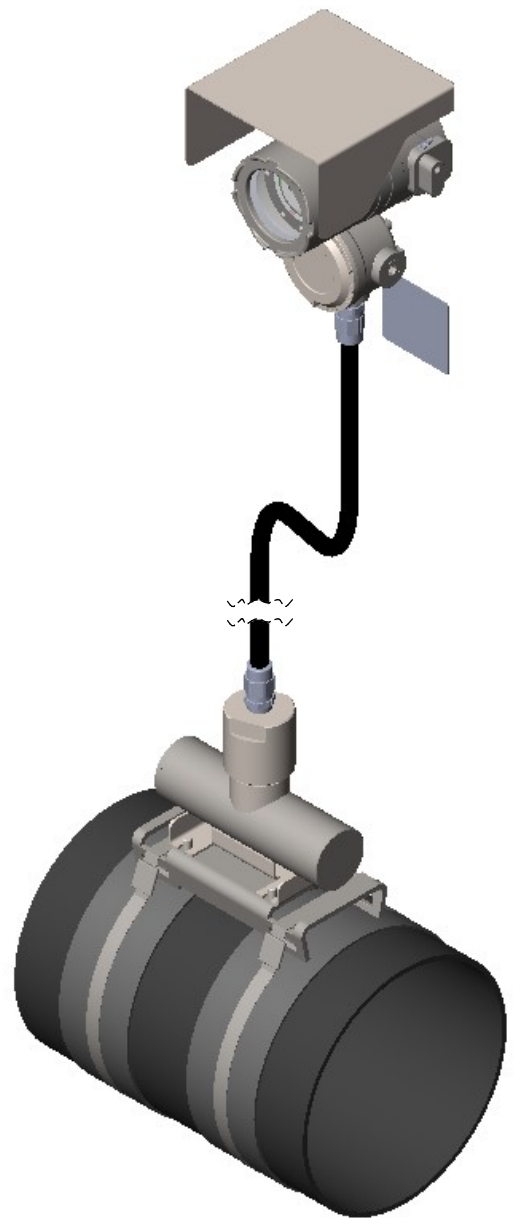
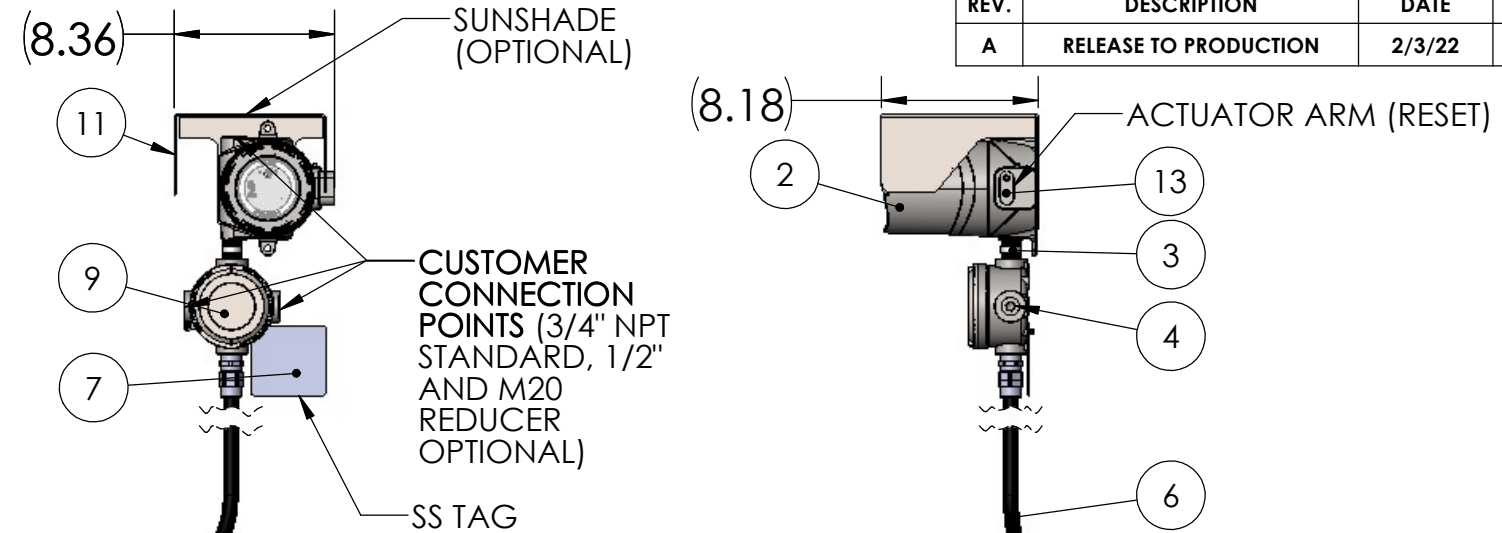


| ITEM NO. | PART NUMBER    | DESCRIPTION                                   | QTY. |
|----------|----------------|---|------|
| 1        | 81-02-0022-00  | ASSEMBLY, 10" CD52 316SS BANDI POTTED ANTENNA | 1    |
| 2        | 795-18-0005-01 | ENCLOSURE EXPLOSION PROOF 316SS ATEX          | 1    |
| 3        | 80-02-0066-00  | ASSEMBLY, CD52 LINE BUSHING CABLE             | 1    |
| 4        | 800-05-2006-23 | PLUG, 3/4 NPT SS IEC Ex CERTIFIED             | 3    |
| 5        | 923-23-0001-01 | FITTING, 2" X 3/4" 316 SS REDUCING            | 1    |
| 6        | 32-16-0012-01  | CABLE GLAND, CSA-UL & ATEX CERTIFIED 3/4-NPT  | 2    |
| 7        | 921-01-XXXX-XX | TAG, CD52 BANDIT ATEX                         | 1    |
| 8        | 944-23-0001-01 | WELDMENT, CD52-XX-316SSMC MOUNTING STAND      | 1    |
| 9        | 32-29-0008-00  | JUNCTION BOX, ATEX 316SS HOUSING              | 1    |
| 10       | BANDING        | 316 STAINLESS STEEL                           | 2    |
| 11       | 944-18-0002-01 | 316SS SUNSHADE, CD52 BANDIT ADALET HEAD       | 1    |
| 12       | INSULATOR      | CATHODIC PROTECTION STRIP                     | 2    |
| 13       | 910-70-0002-00 | ARM MAGNET ACTUATOR SS CD52 316SS             | 1    |

| REVISIONS |                       |        |          |
|-----------|-----------------------|--------|----------|
| REV.      | DESCRIPTION           | DATE   | APPROVED |
| A         | RELEASE TO PRODUCTION | 2/3/22 | KRW      |



**PROPRIETARY AND CONFIDENTIAL**  
 THE INFORMATION CONTAINED IN THIS DRAWING IS THE SOLE PROPERTY OF CDI. ANY REPRODUCTION IN PART OR AS A WHOLE WITHOUT THE WRITTEN PERMISSION OF CDI IS PROHIBITED.

| VENDOR      | PART NO. | UNLESS OTHERWISE SPECIFIED:  |
|-------------|----------|--|
|             |          | DIMENSIONS ARE IN INCHES<br>TOLERANCES:<br>FRACTIONAL ± 1/32<br>ANGULAR: ± 2°<br>TWO PLACE DECIMAL ± .03<br>THREE PLACE DECIMAL ± .010 |
|             |          | INTERPRET GEOMETRIC TOLERANCING PER:<br>ASME Y14.5M - 1994   |
|             |          | MATERIAL   |
|             |          | FINISH   |
| NEXT ASSY   | USED ON  |  |
| APPLICATION |          | DO NOT SCALE DRAWING   |

|   |  |                 |
|---|--|-----------------|
| <b>CDI</b>  |  |                 |
| TITLE:<br><b>ASSEMBLY, CD52 STAINLESS STEEL FLEX-CABLE BANDIT</b> |  |                 |
| SIZE<br><b>B</b>  | DWG. NO.<br><b>81-05-0090-XX-C-XXX</b> | REV<br><b>A</b> |
| SCALE: <b>1:0.25</b>  |  | WEIGHT:         |
|   |  | SHEET 1 OF 1    |