

TRAXALL

Remote Control Software

Rev July 2016

QUICK-START GUIDE



CDI

1801 North Juniper Avenue
Broken Arrow, Oklahoma 74012 U.S.A.
+1 (918) 258-6068 worldwide

www.pigging.com
support@pigging.com



PIGGING PRODUCTS &
SERVICES ASSOCIATION
member



Information in this document is subject to change without notice and applies only to the version of software, hardware, or firmware described on the title page.

The software, hardware, and firmware described in this document are designed, manufactured, and written by CDI. The software and firmware copyright © 2014 CDI with all rights reserved.

This document © 2015, 2016 CDI. All rights reserved.

Document Number 89–09–0032–00

Revision 25 July 2016

TRAXALL, TRAXALL Remote Control, FieldLink, and Configurator products are covered under United States Patents. The TRAXALL family of transmitters is covered under United States Patent No. 9172406.

Microsoft and Windows are U.S. registered trademarks of Microsoft Corporation.

CONTENTS

INTRODUCTION	5
1. START BLUETOOTH.....	6
2. LAUNCH TRAXALL REMOTE CONTROL	8
3. SELECT DEVICE	10
4. LINK DEVICE.....	15
5. OPERATE TRAXALL REMOTE CONTROL	16
ABOUT CDI	24



WARNING



Any operation involving work on pipelines containing gases or liquids under pressure is potentially hazardous. It is necessary, therefore, to follow correct procedures in the use of this equipment to maintain a safe working environment.

No person should use this equipment unless fully aware of potential hazards of working with pressurized pipelines and trained in the procedures stated in this manual.

The purchaser of this equipment is responsible for the training and competence of operators and the manner in which it is used.

Contact CDI immediately should any difficulty arise in the use of this equipment.



WARNING



Always use caution when opening any CDI transmitter that has been in a pressurized environment.

It is possible for pressurized liquid or gas to leak into a transmitter and remain there even after the transmitter has been removed from the pipeline.

Always point the transmitter away from yourself or others when opening a cover or end cap.

INTRODUCTION

TRAXALL Remote Control is a Windows application that will let you monitor and operate your TRAXALL receiver from a remote location (for example, a vehicle cab or shelter during inclement weather) on a laptop or PC.

With TRAXALL Remote Control, you can

- Set gain
- Set tracking/recording mode
- Manage job folders
- Reset the TRAXALL magnetic sensor

Under normal conditions, these tasks may be performed over an approximate maximum distance of 330 ft [100 m].*



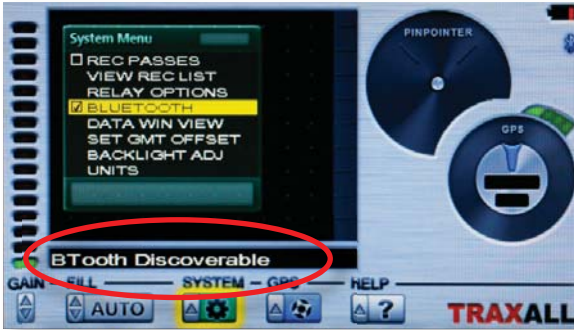
* Using a Bluetooth Class 1 device

1. START BLUETOOTH

From your TRAXALL receiver SYSTEM menu, highlight BLUETOOTH option and select Enter ↵ key to enable Bluetooth communication. The Bluetooth icon will change from grey to **blue*** to confirm.



- * GREY = Bluetooth disabled
- BLUE = Bluetooth enabled
- GREEN = Bluetooth connected



A “BTooth Discoverable” prompt means that TRAXALL Bluetooth is active, but it is still necessary to establish communication with your PC or laptop and then launch the TRAXALL Remote Control application. (See following pages.)

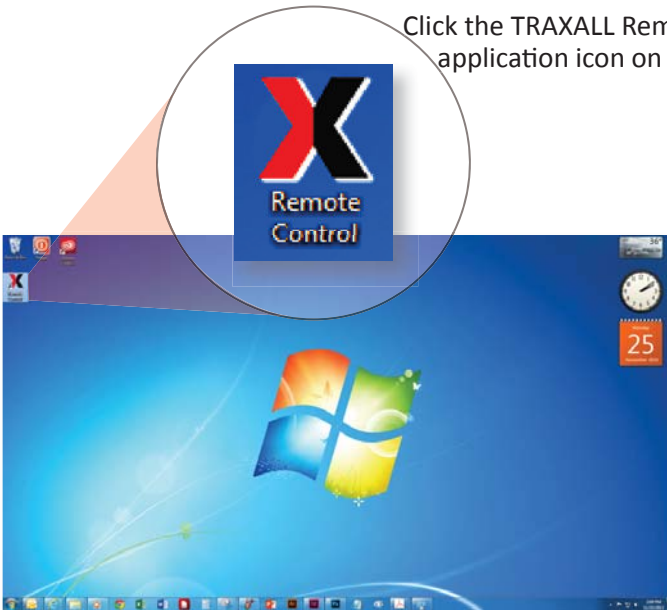
NOTE: only Microsoft Bluetooth drivers are supported by TRAXALL. Contact [CDI support@pigging.com](mailto:CDI_support@pigging.com) or 1-800-580-4234 if you require Bluetooth connectivity assistance.

2. LAUNCH TRAXALL REMOTE CONTROL APPLICATION ¹

A USB Micro Bluetooth Adapter (“dongle”)² is included with your TRAXALL. Insert adapter into your PC or laptop USB port as shown here.³

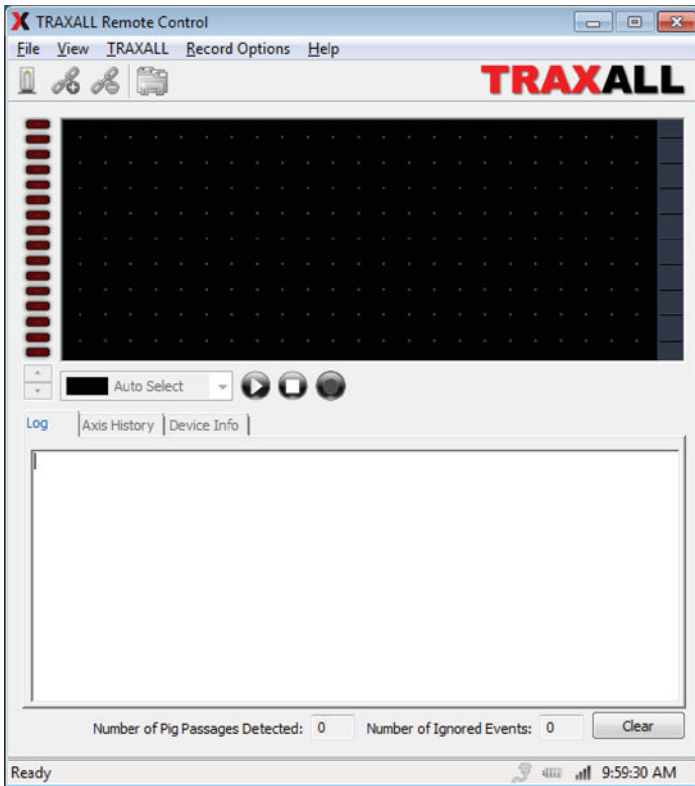


Click the TRAXALL Remote Control application icon on your PC desktop.



Launch TRAXALL Remote Control (cont.)

The TRAXALL Remote Control application will open.



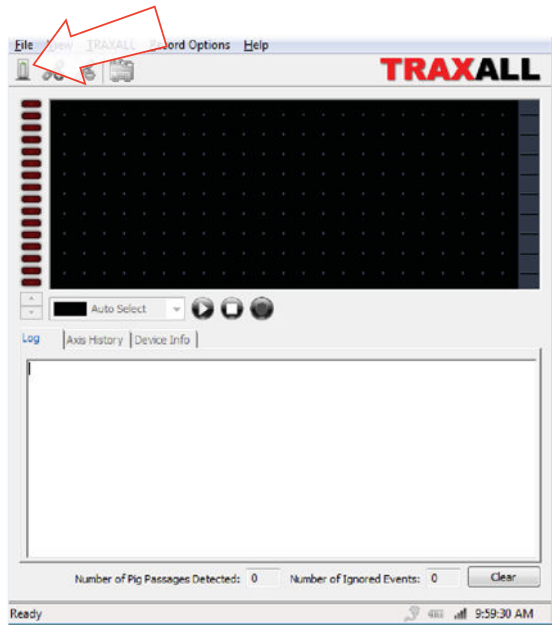
¹ Contact CDI support@pigging.com or 1-800-580-4234 to obtain and install TRAXALL Remote Control to your PC.

² CDI Part # 81-03-0041-00

³ If your PC has built-in Bluetooth, it will be necessary to disable it via Windows Device Manager.

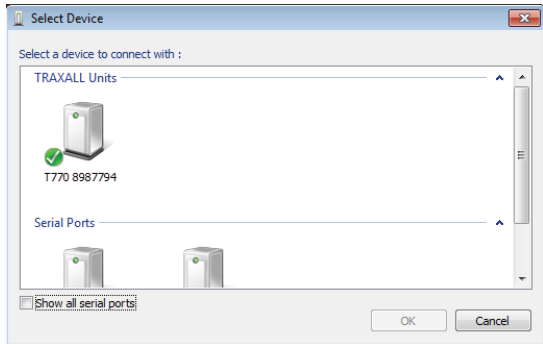
3. SELECT DEVICE

Click on the **Select Device** button to open the Device Survey Window



The Device Survey Window will display all previously-paired TRAXALL devices

If your device is not listed, you will need to pair it through the Windows Bluetooth settings application.



NOTE: Access to the Windows device discovery screen will vary depending upon your version of Windows.

Select Device (cont.)



“Clock” icon indicates that TRAXALL Remote Control is verifying connectivity for a TRAXALL unit.

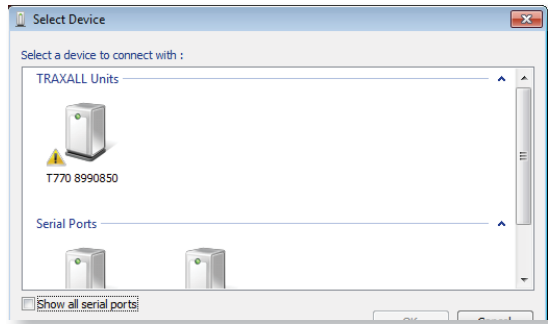


Green check mark icon indicates TRAXALL unit or units are configured for use on your PC.



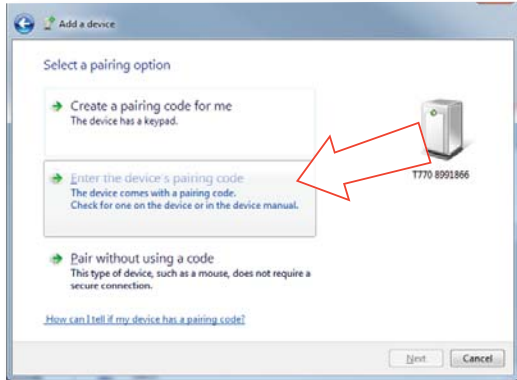
Warning icon indicates the TRAXALL unit is not communicating with TRAXALL Remote Control.

If the Device Survey Window indicates a non-reachable device, and you are certain the TRAXALL unit in question has Bluetooth enabled and is within communication range, remove the device through the Windows Bluetooth settings application, then rediscover and pair the device.



Select Device (cont.)

When prompted, enter a pairing code for the TRAXALL. The pairing code will be the last four numbers of your TRAXALL's serial number.



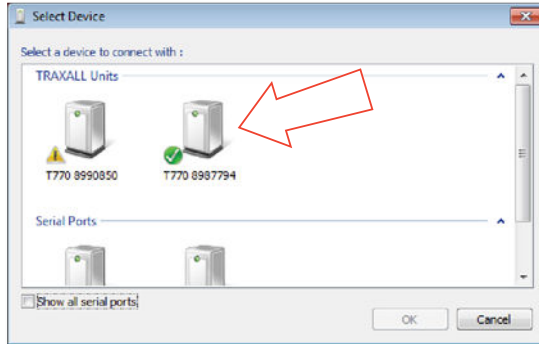
NOTE: This screen will vary depending upon your version of Windows.

The serial number may be accessed via the TRAXALL HELP menu.

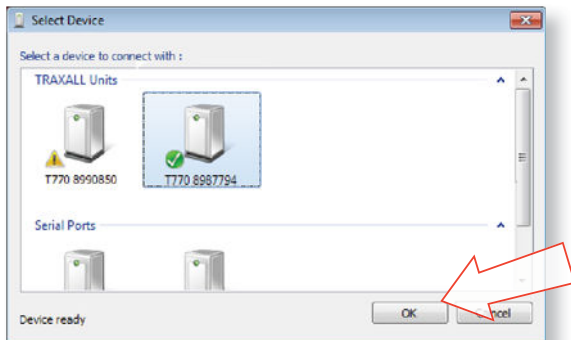


Select Device (cont.)

Select desired device.

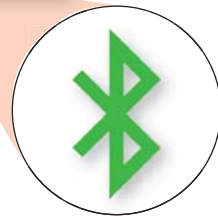
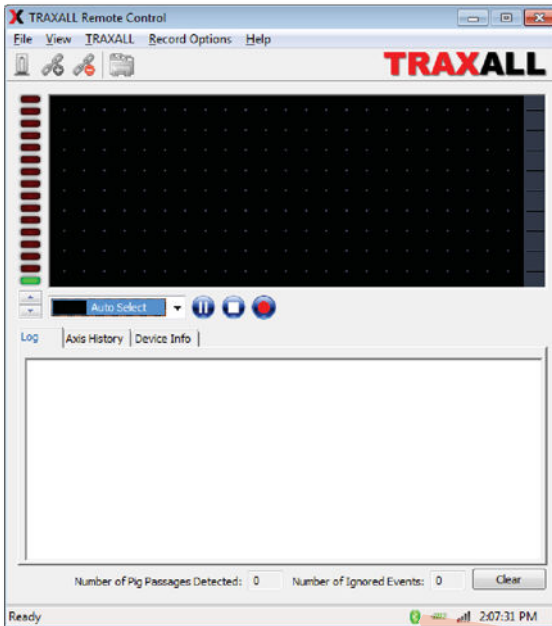


Click OK button to begin connection.



Select Device (cont.)

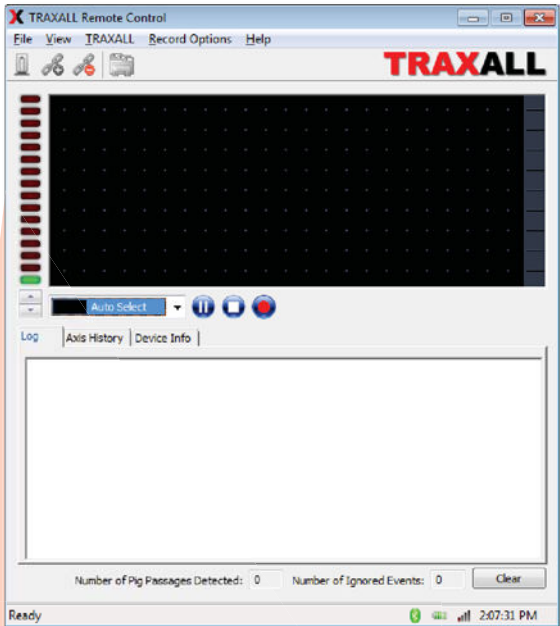
When communication is established, the Bluetooth icon will change from **blue** to **green**.*



- * **GREY** = Bluetooth disabled
- BLUE** = Bluetooth enabled
- GREEN** = Bluetooth connected

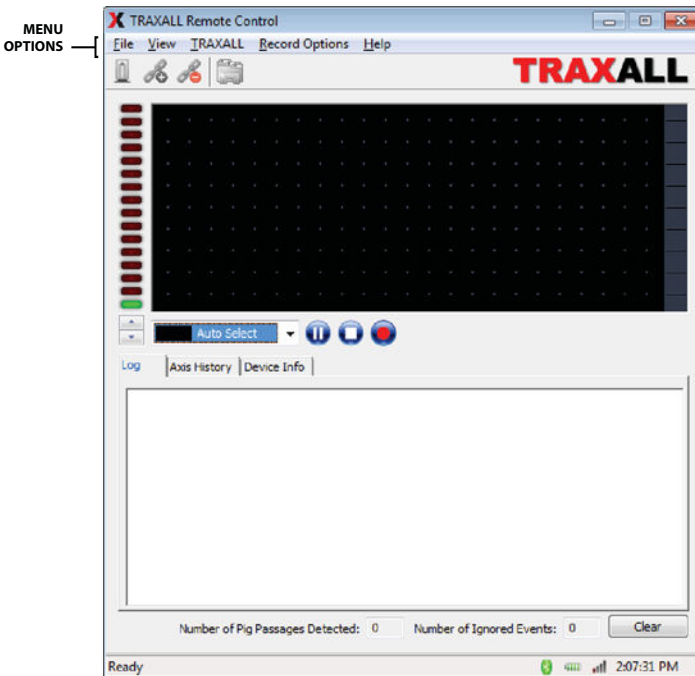
4. LINK DEVICE

If the TRAXALL Remote Control application window on your PC shows TRAXALL activity you have communication.



5. OPERATE TRAXALL REMOTE CONTROL

TRAXALL Remote Control functions can be accessed by menus, icons, and/or tabs.



MENU OPTIONS

File

Save

Saves text in Log Window to a file

Exit

Closes the TRAXALL Remote Control application

View

Tool Bar

Check/uncheck to show

Status Bar

Check/uncheck to show

MENU OPTIONS

TRAXALL

Reset Sensor

Restores MR sensor sensitivity*

Transport

Live

Pause

Stop

These commands control History Window data stream from TRAXALL receiver. They do not control TRAXALL functions, but control only the real-time display seen at the PC end.

Gain

Controls TRAXALL receiver sensitivity.

Increase +

Decrease –

Record Options

These commands function exactly as on the TRAXALL receiver unit.

Working Folder

Assign passage recordings to any of five job folders for later review

Automatic

TRAXALL will remain in a wait-state until a pig transmitter reaches the MR sensor

Manual

Prepares TRAXALL for user-controlled Start/Stop recording (see Record Control buttons)

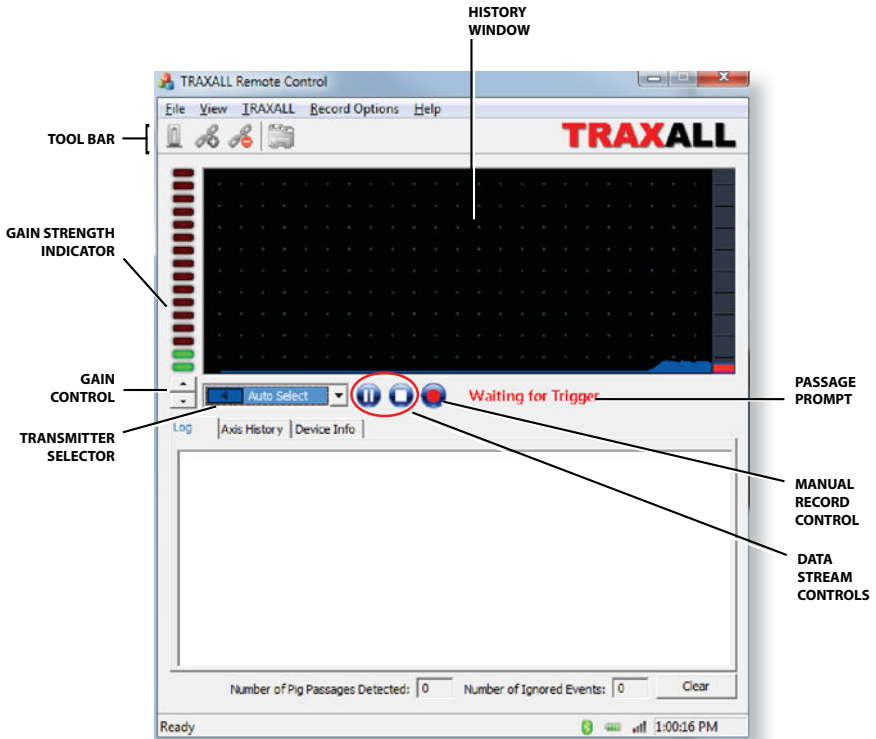
Help

Software Version and Build information

* When exposed to a very strong varying magnetic field, the magneto-resistive (MR) sensor array used in Pinpoint and MAG modes can lose sensitivity until it is reset. This option restores MR sensitivity by realigning the magneto-resistive magnetic dipoles.

When TRAXALL is in MAG mode the MR array is automatically reset.

Operate TRAXALL Remote Control (cont.)



TOOL BAR

Bluetooth Wizard
Connect
Disconnect

HISTORY WINDOW

Real-time graphic plot of transmitter passage

PASSAGE PROMPT

When TRAXALL receiver is recording, these prompts will show in successive order

Waiting for Trigger.
Verifying Passage
Logging Data

MANUAL RECORD CONTROL

Start/Stop recording when in Manual mode



DATA STREAM CONTROLS

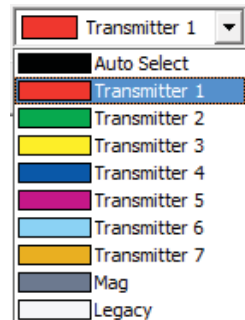
Same function as TRAXALL>Transport options (pg. 13) These commands control the display stream from the TRAXALL History Window.



TRANSMITTER SELECTOR

Similar to the TRAXALL receiver FILL menu. Use the drop-down menu to select transmitter type.

Auto Select
Transmitter 1–7
Mag
Legacy

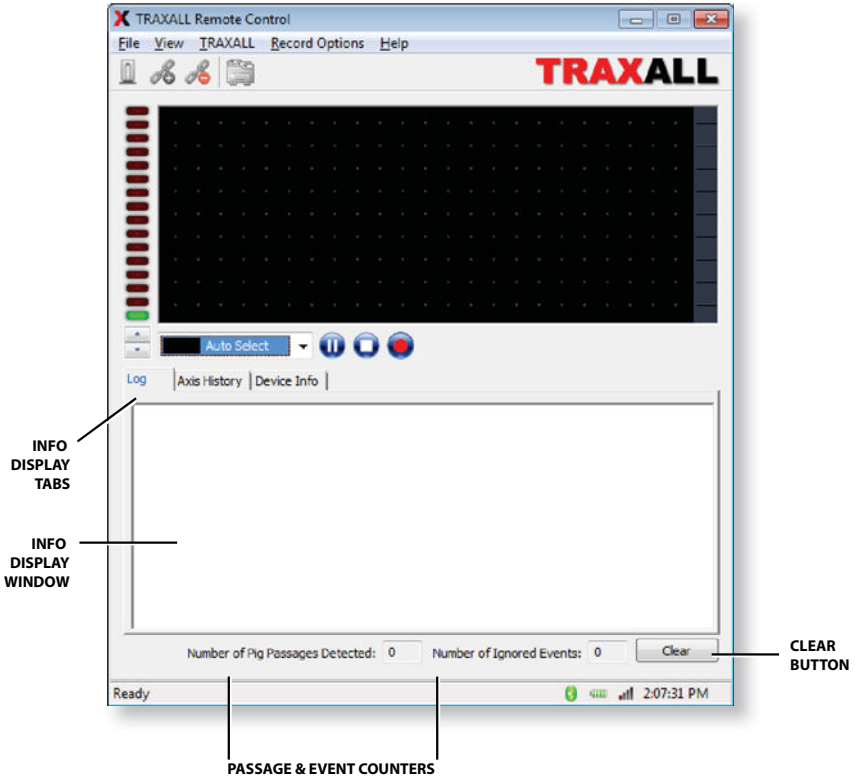


Selection of one type excludes others.

GAIN CONTROL & INDICATOR

▲ ▼ to increase/decrease TRAXALL receiver sensitivity.
Green/red LED stack indicates current sensitivity level

Operate TRAXALL Remote Control (cont.)



INFO DISPLAY WINDOW & TABS

Choose between:

Log

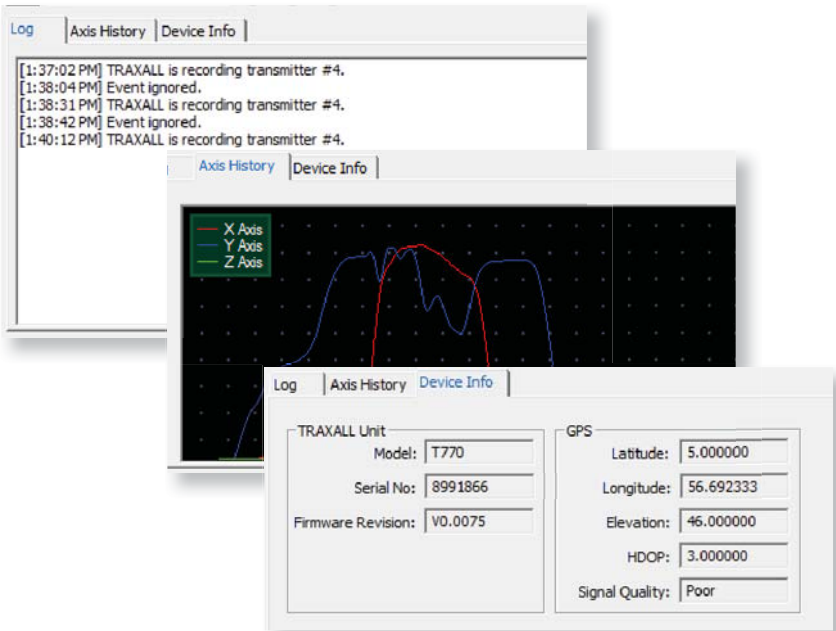
Tracking information in text format

Axis History

Real-time plots of signal relative field magnitude where red = X, green = Y, and blue = Z

Device Info

TRAXALL unit and GPS information



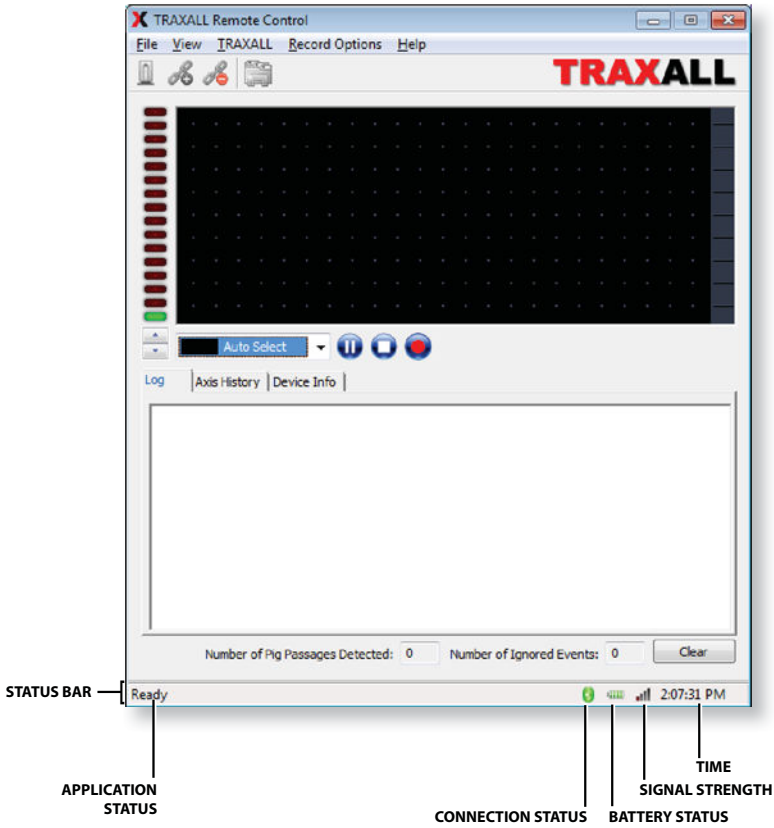
Passage and Event Counters

Number of pig passages/Ignored events

Clear

Clears Log Window and Passage and Event counter entries

Operate TRAXALL Remote Control (cont.)



STATUS BAR

Application Status

Displays current state of TRAXALL Remote Control application

Connection Status

Color = connected; **Grey** = disconnected

Battery

TRAXALL battery charge status

Signal Strength

TRAXALL-PC Bluetooth link

Time

Local time-of-day

ABOUT CDI

CDI is a family-owned and operated business located in Broken Arrow, Oklahoma, just 12 miles from downtown Tulsa. Incorporated in 1982, CDI has proudly been manufacturing products in the United States for more than 32 years. CDI currently employs 45 people in the areas of electronics and mechanical design, software and firmware programming, electronics manufacture, machining, and more.

All CDI products are designed and built completely in-house utilizing an on-premises machine shop boasting six fully-automated CNC machines as well as full-time electronics assembly personnel.

